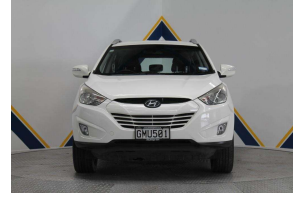


# 2012 Hyundai iX35



## VEHICLE INFORMATION

### Cash Price

Includes GST,  
Registration &  
Licensing

# \$17,995

Note: A Clean Car fee/rebate does  
not apply to this vehicle

Finance this vehicle  
from only

# \$115.24

per week\*

Total Amount Payable

# \$23,969.76



New Zealand's Finance Company

Gain peace of mind  
with Mechanical  
Breakdown Insurance.  
Ask us how.

### Body

5 door, RV/SUV

### Odometer

98,235 km

### Engine

2400 cc

### Fuel Type

Petrol

### Transmission

Automatic

### Wheels

-

### VIN

KMHJU81CSDU591521

### Reg No.

GMU501

### Ext Colour

White

### History

NZ New

### Seats

5 seats

### Interior

Black, Part Leather

### Audio

-

### Stock ID

7156

### Exterior Features

- » Power Mirrors

### Interior Features

- » Air-Con
- » Power Windows

### Mechanical Features

- » Bluetooth
- » NZ New
- » Multiple Airbags
- » ABS Brakes
- » AWD
- » Factory Alloys
- » Electronic Fuel Injection
- » Remote Door Locking
- » Central Locking

**Advantage Cars**

Advantage Cars, Phone 09 274 3151, Email sales@advantagecars.co.nz  
11 Reg Savory Place, Botany, Auckland 1013, New Zealand  
www.advantagecars.co.nz

\* Finance calculation based on a 48 month term, no deposit and with an example annual fixed interest rate of 13.95%. Actual interest rate may be higher or lower. Includes an establishment fee of \$296.00. Full term total amount payable of \$23,969.76. Estimate only, not an offer of finance. Terms, conditions and lending criteria apply.