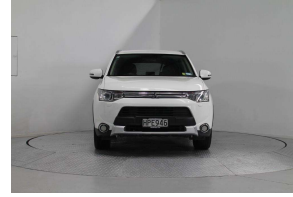


2014 Mitsubishi Outlander XLS PHEV



VEHICLE INFORMATION

Cash Price

Includes GST,
Registration &
Licensing

\$24,995

Finance this vehicle
from only

\$159.34

per week*

Total Amount Payable

\$33,143.03



New Zealand's Finance Company

Gain peace of mind
with Mechanical
Breakdown Insurance.
Ask us how.

Body

5 door, S/W

Odometer

104,225 km

Engine

2000 cc

Fuel Type

Petrol

Transmission

Automatic

Wheels

-

VIN

JMFXDGG2WEZ001231

Reg No.

HPE946

Ext Colour

White

History

NZ New, 2 owners

Seats

5 seats

Interior

Black, Part Leather

Audio

-

Stock ID

6731

Exterior Features

- » Power Mirrors

Interior Features

- » Air-Con
- » Power Windows

Mechanical Features

- » Bluetooth
- » Multiple Airbags
- » ABS Brakes
- » 4WD
- » Factory Alloys
- » Electronic Fuel Injection
- » Remote Door Locking
- » Central Locking

Advantage Cars

Advantage Cars, Phone 09 274 3151, Email sales@advantagecars.co.nz
11 Reg Savory Place, Botany, Auckland 2013, New Zealand
www.advantagecars.co.nz

* Finance calculation based on a 48 month term, no deposit and with an example annual fixed interest rate of 13.95%. Actual interest rate may be higher or lower. Includes an establishment fee of \$296.00. Full term total amount payable of \$33,143.03. Estimate only, not an offer of finance. Terms, conditions and lending criteria apply.